



# PROJECT PROFILE

## MISIPAWISTIK CREE NATION - CULTURAL CENTER



### PROJECT OVERVIEW



#### Location

Misipawistik Cree Nation, Manitoba



#### Project Type

Full-Scope Mechanical & Electrical at Misipawistik Ininiwikamik



#### Cobra Mechanical Role

Mechanical & Electrical Contractor



#### Project Duration

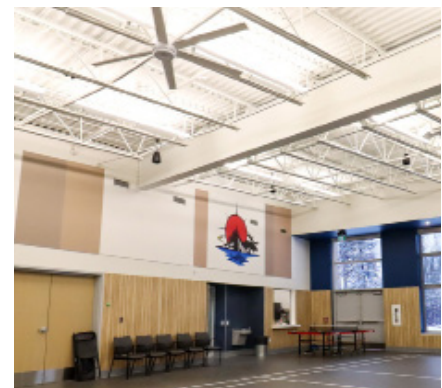
June 2024 – December 2025

Cobra Mechanical was engaged to install the complete mechanical and electrical systems for the Misipawistik Ininiwikamik — a cultural facility designed to support gatherings, programming, recreation, and ceremony in a northern Manitoba environment.

Our role focused exclusively on the installation, integration, and commissioning of mechanical and electrical infrastructure within the broader construction program.

### PROJECT SNAPSHOT

- Remote northern operating environment
- Full mechanical and electrical installation scope
- Boiler plant and hydronic heating systems
- Air distribution and ventilation
- Complete building plumbing systems serving washrooms, kitchen, and support spaces
- Gymnasium HVAC and air movement systems
- Commercial kitchen with a full range, dishwasher and washing area
- Electrical distribution and lighting
- Parking lighting and EV charging infrastructure
- Fire alarm and building controls
- Mechanical and electrical installation progressed over an 18-month construction schedule



## PROJECT SNAPSHOT

The Misipawistik Ininiwikamik was constructed as a central gathering space for the community. The facility includes meeting rooms, offices, a commercial kitchen, a gymnasium that doubles as an event space, and a dedicated healing room. The gym functions both as a recreational space — equipped with a basketball backboard — and as a large-capacity gathering area. This required mechanical systems capable of supporting fluctuating occupancy levels while maintaining consistent air circulation and temperature control. Commercial-grade ceiling fans assist with air movement across the open volume of the space.

Located in northern Manitoba, the building required heating and ventilation systems engineered for extreme seasonal conditions.

A defining architectural feature of the facility is its circular healing room. The geometry and exposed wood ceiling elements required careful coordination of mechanical and electrical routing to preserve the architectural intent while ensuring full system functionality.



## SCOPE OF WORK

Cobra Mechanical installed all mechanical and electrical systems throughout the facility.

### Mechanical Systems

- Boiler plant installation
- Hydronic heating distribution
- Air handling and ventilation systems
- Gymnasium air movement and ventilation coordination
- Complete building plumbing systems serving washrooms, kitchen, and support spaces
- Mechanical system tie-ins and controls coordination
- Insulation coordination

The mechanical room serves as the operational core of the building. It houses the boiler system, air handling units, distribution piping, and associated controls. Installations were completed with attention to clean routing, clear labeling, and accessible layout to support long-term serviceability. Hydronic heating systems were installed to deliver consistent performance across large gathering spaces, specialty rooms, and high ceiling areas.



## SCOPE OF WORK

### Electrical Systems

- Interior and exterior lighting systems
- Parking lot lighting
- EV charging infrastructure
- Power distribution panels and circuits
- Fire alarm systems
- Controls and automation integration
- Architectural and task lighting

Lighting installations were integrated throughout the facility to support both function and presentation. This included lighting for display cases, office workspaces, sink counter areas, hallways, the healing room and the main entrance. Fixtures were positioned to enhance visibility while maintaining a clean finish consistent with the architectural design. Mechanical and electrical systems were installed, tested, and coordinated to ensure full integration prior to commissioning.

## EXECUTION & SITE CONSIDERATIONS

Mechanical and electrical installation progressed over an 18-month construction schedule in a remote northern environment. Work followed planned trade sequencing — the structured order in which trades complete installation to prevent conflicts, maintain schedule integrity, and protect completed systems.

Cobra Mechanical worked alongside subcontractors including Bison Fire, Trane Controls, and Thermo Applicators to integrate fire protection, controls, and insulation into the overall system delivery.

All installations were completed with consistent adherence to safety standards and quality control.



## PROJECT OUTCOME

Upon completion, all mechanical and electrical systems were:

- Installed to specification
- Tested and verified
- Integrated with building controls
- Commissioned and operational

Misipawistik Ininiwikamik is now equipped with:

- Reliable hydronic heating suited for northern winters
- Balanced ventilation systems for large capacity gathering spaces
- Integrated gym air movement systems
- Complete plumbing systems serving
- washrooms, kitchen, and facility support areas
- Coordinated electrical distribution and
- architectural lighting
- Fire alarm and safety systems



Cobra Mechanical's scope was delivered in full, providing the mechanical and electrical infrastructure required for the building's operation.

## WE DON'T MAKE EXCUSES. WE MAKE IT HAPPEN.

Cobra Mechanical delivers commercial and industrial installs, service, and repairs across Manitoba and beyond. Our crews are built for complex projects, tight timelines, and the toughest environments.

Tel. 1-866-473-1635  
Info@cobramechanical.ca  
cobramechanical.ca

961 Mazur Ave, Beausejour,  
MB R0E 0C0

